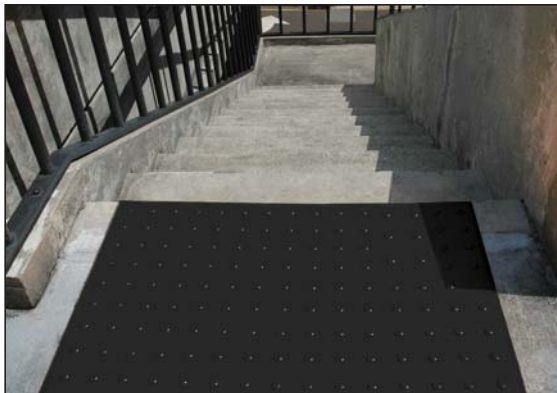


Ultra  ADA Pads®



# Detectable Warning System Aids The Visually Impaired



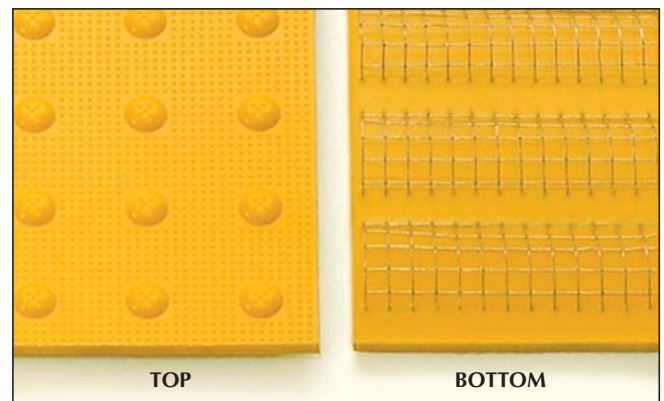
- Available in four (4) sizes: 2' x 2', 2' x 3', 2' x 4' and 2' x 5'.
- Safety yellow color assists people with severe visual impairment. Black, brick red and custom colors also available.
- Flexible construction conforms to fit dips, slopes and inclines in sidewalks and walkways.
- Can be installed as part of either new construction (Cast-in-Place) or as a retrofit (Surface Mount).
- Ultra-ADA Pads are designed for the visually impaired to feel the raised, truncated domes with their feet. This, in combination with the tapping cane, can alert them to a different surface than the surrounding concrete sidewalk and an upcoming intersection.
- Surface Mount model (Retrofit) installs quickly and easily using adhesive and anchors (included).
- Better slip resistance than composites.
- Better impact resistance than composites.
- UNBREAKABLE.

U.S. Patent Pending

ULTRA-ADA PADS			
SURFACE MOUNT (RETROFIT)			
Size	Yellow	Black	Brick Red
2' x 2' (610 mm x 610 mm)	Part# 0750	Part# 0756	Part# 0760
2' x 3' (610 mm x 914 mm)	Part# 0753	Part# 0759	Part# 0763
2' x 4' (610 mm x 1,219 mm)	Part# 0751	Part# 0757	Part# 0761
2' x 5' (610 mm x 1,524 mm)	Part# 0752	Part# 0758	Part# 0762
CAST-IN-PLACE (WET-SET)			
Size	Yellow	Black	Brick Red
2' x 2' (610 mm x 610 mm)	Part# 0720	Part# 0730	Part# 0725
2' x 3' (610 mm x 914 mm)	Part# 0721	Part# 0731	Part# 0726
2' x 4' (610 mm x 1,219 mm)	Part# 0722	Part# 0732	Part# 0727
2' x 5' (610 mm x 1,524 mm)	Part# 0723	Part# 0733	Part# 0728

- **Complies with the Americans with Disabilities Act (ADA), 49 CFR 37.9.**  
*Provide tactile warning surfaces which comply with the detectable warnings on walking surfaces section of the Americans with Disabilities Act.*  
*Title 49 CFR Transportation, Part 37.9 Standards for Accessible Transportation Facilities, Appendix A, Section 4.29.2 Detectable Warnings on Walking Surfaces.*

## CAST-IN PLACE (WET-SET) MODEL



- Heavy-duty, galvanized steel mesh molded into the bottom of the pad, helps secure it to the concrete.
- Pads are quickly and easily installed — simply press into freshly poured concrete until steel mesh is embedded and pad is flush with surface.
- Flexible urethane material bends and conforms to slopes, curves and other irregularities.

